

## **MOUNTAIN GOLD™ HIMALAYAN SALT CRYSTAL LAMPS**

Our rock salt lamps are hand mined and are made from salt crystals that are approximately 250 million years old from the Himalayan mountain regions.

- ✓ Beautifies your environment
- ✓ Provides a warm, tranquil glow
- ✓ A natural, healthy mood elevator
- ✓ Made of grade 'A' Himalayan crystal salt

### **SPECIAL FEATURES:**

- ✓ 25 watt clear bulbs
- ✓ 15 watt coloured light bulbs
- ✓ Rotating dimmer switch
- ✓ Rated Grade A-quality stones

### **ALSO...**

- ✓ Individual product brochures as well as 4-page glossy brochures available
- ✓ Full store display attracts attention to your store for these and all your products

**All our lamps are CSA certified for Canada and the USA**

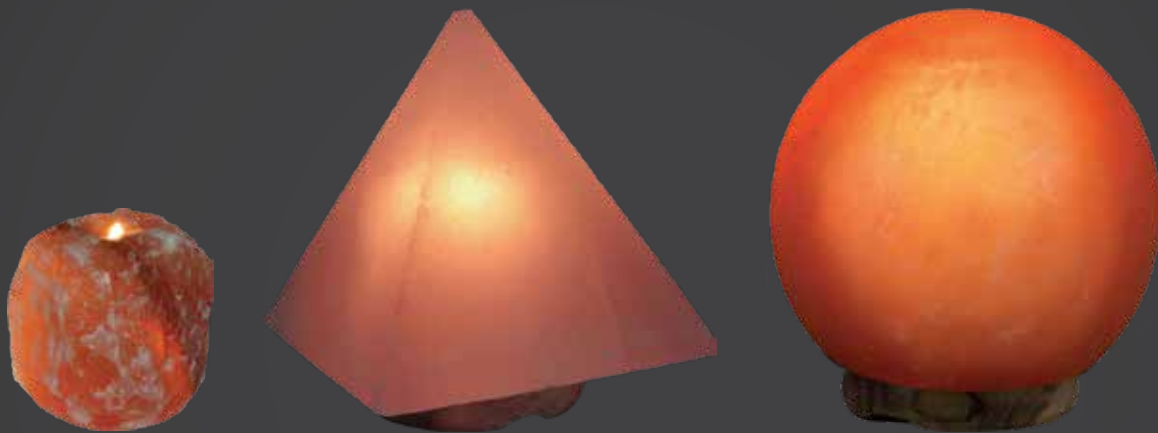


### **T-ZONE HEALTH™**

2-59 Comstock Rd., Scarborough, ON. M1L 2G6  
416-285-6055 Fax 416-285-8918  
info@t-zonehealth.com www.t-zonehealth.com



*All lamps models are compatible with our coloured bulbs*



Weight (kg)

1.5-3	3-4	4.75-7	8-10	12.5-16	18-24	30-40	45-55	75-90
-------	-----	--------	------	---------	-------	-------	-------	-------

## BLISTER PACKS

Specially designed light bulbs to go with Mountain Gold™ Himalayan Salt Crystal lamps. Great as an add-on sale.

### FUN PACK

- ✓ 1 x Red Bulb (15 watt)
- ✓ 1 x Yellow Bulb (15 watt)
- ✓ 1 x Green Bulb (15 watt)

### CLEAR PACK

- ✓ 2 x Clear Bulbs (25 watt)

### RAINBOW PACK

- ✓ 1 x Red Bulb (15 watt)
- ✓ 1 x Yellow Bulb (15 watt)
- ✓ 1 x Green Bulb (15 watt)
- ✓ 1 x Blue Bulb (15 watt)
- ✓ 1 x Orange Bulb (15 watt)
- ✓ 1 x Purple Bulb (15 watt)



## T-ZONE HEALTH™

2-59 Comstock Rd., Scarborough, ON. M1L 2G6  
416-285-6055 Fax 416-285-8918  
info@t-zonehealth.com www.t-zonehealth.com

## **MOUNTAIN GOLD™ HIMALAYAN SALT MOOD LAMPS**

Made of rare white semi-precious rock, use these beautiful mood lamps to set the mood in any room of your home or office. Comes with 5 different coloured bulbs.

Change the colour bulbs to suit your mood, decor, or for colour therapy applications.

### **Colour Therapy Guide:**

WHITE promotes purity.

RED is energizing.

YELLOW relates to self worth.

GREEN is the colour of balance and harmony.

BLUE is for calming.

ORANGE is the colour of creativity.

### **AMAZING BENEFITS:**

- ✓ Beautifies your environment
- ✓ Provides a warm, tranquil glow
- ✓ Great for use as a night light
- ✓ Made of grade 'A' Himalayan crystal salt



### **T-ZONE HEALTH™**

2-59 Comstock Rd., Scarborough, ON. M1L 2G6

416-285-6055 Fax 416-285-8918

info@t-zonehealth.com www.t-zonehealth.com



## **MOUNTAIN GOLD™ HIMALAYAN SALT USB LAMPS**

Himalayan USB Salt Lamps are powered by a USB cord that plugs directly into a computer USB port.

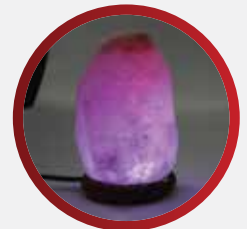
Rock salt lamps are made from salt crystals that are approximately 250 million years old from the Himalayan mountain regions.

Available in a pink salt lamp with a clear LED bulb, and in a white halite lamp with a multi-colour LED bulb (which changes colour every 3-4 seconds automatically).

AC adapter included.

### **Himalayan Salt Stone Lamps also:**

- ✓ Beautifies Your Environment
- ✓ Provides A Warm, Tranquil Glow
- ✓ Perfect As A Gift
- ✓ Made Of Grade 'A' Himalayan Crystal Salt



### **T-ZONE HEALTH™**

2-59 Comstock Rd., Scarborough, ON. M1L 2G6  
416-285-6055 Fax 416-285-8918  
info@t-zonehealth.com www.t-zonehealth.com

## HIMALAYAN SALT LAMP ESSENTIAL OIL WARMERS

Scent your home or use for therapeutic applications using a beautiful Himalayan salt lamp!

Himalayan salt lamp warmers use a glass plate to hold essential oils. The heat warms the oils to body temperature, lifting the scent into the air.



### T-ZONE HEALTH™

2-59 Comstock Rd., Scarborough, ON. M1L 2G6  
416-285-6055 Fax 416-285-8918  
info@t-zonehealth.com www.t-zonehealth.com

## PURE ESSENTIAL OILS

Organic & wildcrafted - 100% pure, chemical free. Exquisite fragrances sourced from around the world.

Beautiful, high quality crafted essential oils. Available in pre-packs as well as individually, in several bottle sizes.

Available oils - jasmine, lavender, rose, lemon, pink grapefruit, bergamot, sweet orange, peppermint, vanilla, and many more. Wildcrafted and organic available.

Great acrylic display also available.

## ALSO AVAILABLE OUR 3-PACK THEMED SETS

- ✓ Skin
- ✓ Romance
- ✓ Energise
- ✓ Sleep
- ✓ Tranquillity
- ✓ Immune

### And...

- ✓ Six Pack (Hemp Pouch)
- ✓ Ten Pack (Hemp Pouch)
- ✓ Chakra Ten Pack (Hemp Pouch)
- ✓ 16-pack (Hemp Pouch)

### And...

- ✓ 6-Pack Gift Box 10ml
- ✓ 6-Pack Gift Box 20ml

Carrier oils also available in 3 scents - sweet almond, grapeseed and jojoba

## T-ZONE HEALTH™

2-59 Comstock Rd., Scarborough, ON. M1L 2G6  
416-285-6055 Fax 416-285-8918  
info@t-zonehealth.com www.t-zonehealth.com





## ESSENTIAL OIL DIFFUSERS

Scent your environment with just a few drops of any essential oil.

Ultrasonic diffusers use sound to vibrate the water, which creates a cool scented mist.

### D001

**Capacity:** 100 ml  
**Option of Intermittent or Continuous Mist:** Yes  
**Hours of Mist: Continuous:** about 5 hours,  
**Intermittent:** about 10 hours  
**Mist Amount:** 10-20 ml/hour  
**Ultra-quiet operation:** Yes  
**Auto shut off when empty:** Yes  
**Light:** Cycles through 7 colours  
**Light can pause on a particular colour**  
**Timer:** No  
**Foot Operated:** No

### D002 (LIGHT WOOD) & D003 (DARK WOOD)

**Option of Intermittent or Continuous Mist:** Yes  
**Hours of Mist:** up to 18 hours  
**Mist Amount:** 16.7-33.3 ml/hour  
**Ultra-quiet operation:** Yes  
**Auto shut off when empty:** Yes  
**Light:** Cycles through 7 colours  
**Light can pause on a particular colour**  
**Timer:** 1h, 3h, 6h, continuous  
**Foot Operated:** No

### D004 (WHITE) & D005 (BLACK)

**Capacity:** 150 ml  
**Option of Intermittent or Continuous Mist:** No  
**Hours of Mist:** up to 9 hours  
**Mist Amount:** 16.7 ml/hour  
**Ultra-quiet operation:** Yes  
**Auto shut off when empty:** Yes  
**Light:** Cycles through 7 colours  
**Light can pause on a particular colour**  
**Timer:** No  
**Foot Operated:** Yes



## T-ZONE HEALTH™

2-59 Comstock Rd., Scarborough, ON. M1L 2G6  
416-285-6055 Fax 416-285-8918  
info@t-zonehealth.com www.t-zonehealth.com

## ESSENTIAL OIL DIFFUSER SETS

### FEATURES:

**Capacity:** 120 ml  
**Option of Intermittent or Continuous Mist:** Yes  
**Hours of Mist Continuous:** about 4 hours,  
**Intermittent:** about 8 hours  
**Mist Amount:** 15-30 ml/hour  
**Ultra-quiet operation:** Yes  
**Auto shut off when empty:** Yes  
**Light:** No  
**Timer:** No  
**Foot Operated:** No

### D006 (METALLIC)

A pretty metallic pattern is added to the glass, creating a night sky quality.

### D007 (CERAMIC)

This ceramic diffuser adds elegance to any room.

### D008 (BLUE GLASS)

These diffusers are made of beautiful blown glass - Smoky Blue Colour.

### D009 (WHITE GLASS)

These diffusers are made of beautiful blown glass - Opal Colour.

**All these diffusers (D006-D009) come with 6 essential oils packed in with the diffuser. Essential oils are: 10ml Wildcrafted Essential Oil bottles of Lavender, Eucalyptus, Peppermint, Cinnamon, Lemongrass, and Pink Grapefruit.**



### T-ZONE HEALTH™

2-59 Comstock Rd., Scarborough, ON. M1L 2G6  
416-285-6055 Fax 416-285-8918  
info@t-zonehealth.com www.t-zonehealth.com

## ESSENTIAL OIL CANDLES

**100% soy wax candles, scented with 100% pure wildcrafted essential oil.**

Contained in high quality white frosted glass with a fitted grey wash wood lid.

Each candle is 280 g of wax; approximate burn time is 50 hours.

Packed individually in their own gorgeous box, ready for gifting. Perfect as a hosting, birthday, or holiday gift.

**Scented with jasmine or sweet orange essential oil.**



**T-ZONE HEALTH™**

2-59 Comstock Rd., Scarborough, ON. M1L 2G6  
416-285-6055 Fax 416-285-8918  
info@t-zonehealth.com www.t-zonehealth.com

## ESSENTIAL OIL SOAP

This is a 125 gram bar of high end luxury soap (81 x 56 x 27 mm). The soap is all natural with shea butter, olive oil and our 100% pure jasmine wildcrafted essential oil.

**Pretty leaf pattern embedded in the soap.**  
**Vegan, non-GMO ingredients with no animal testing.**

### INGREDIENTS:

SODIUM PALMATE & SODIUM PALM KERNELATE, JASMINUM OFFICINALE, AQUA, SHEA BUTTER, GLYCERIN, OLIVE OIL, TETRASODIUM EDTA, SODIUM CHLORIDE



### T-ZONE HEALTH™

2-59 Comstock Rd., Scarborough, ON. M1L 2G6  
416-285-6055 Fax 416-285-8918  
info@t-zonehealth.com www.t-zonehealth.com

## FACE AND NECK SHEET MASK

We have developed a sheet mask for the face and neck that is truly best in the industry.

**Shape:** This face mask is special because it does not only cover the face, it covers the neck too. This is a unique feature that only a few other competitors offer.

**Ingredients:** This is a hugely great value face mask. These are top-level ingredients that actually work.

**Peptides** - These proteins and active molecules promote collagen production in the skin.

**Coq10** - a major antioxidant, helping to protect your skin from free radicals.

**Hyaluronic Acid** - retains moisture and gives a boost to collagen production.

**Aloe Vera** - soothes and moisturizes, with a wonderful greaseless finish.

**Collagen** - the be-all and end-all of anti aging! Collagen is what makes our skin look young.

**Panthenol** - a form of vitamin B, which is deeply moisturizing.

**Tremella Fuciformis Extract** - hydrates and lightens, high in vitamin D.

**Essential oil:** These face masks include 100% wildcrafted essential oil. There are two types, jasmine and frankincense. Both smell amazing, and have qualities that help the skin. Jasmine has beautiful moisturizing qualities. Frankincense is an astringent, meaning it helps promote clear skin, and is used frequently to help achieve younger looking skin.

**Artwork:** We have two very different types of artwork. Both are beautiful but one may be a perfect fit for your customer. Both types are available for both scents, and also available in an English language version that is appropriate for provinces outside of Quebec (and is also legal for sale in the US).

**Acrylic display available - a match to the essential display.**

### T-ZONE HEALTH™

2-59 Comstock Rd., Scarborough, ON. M1L 2G6

416-285-6055 Fax 416-285-8918

info@t-zonehealth.com www.t-zonehealth.com



**ESSENTIAL OIL JEWELRY**

Styles to choose from, including our new signature collection rose gold crystal pieces.

**NECKLACES**



N001



N023



N042



N041

**BRACELETS**



B302



B303



B305



B310

**KEYCHAINS**



KC001



KC002



KC003

**CAR DIFFUSERS**



CD001



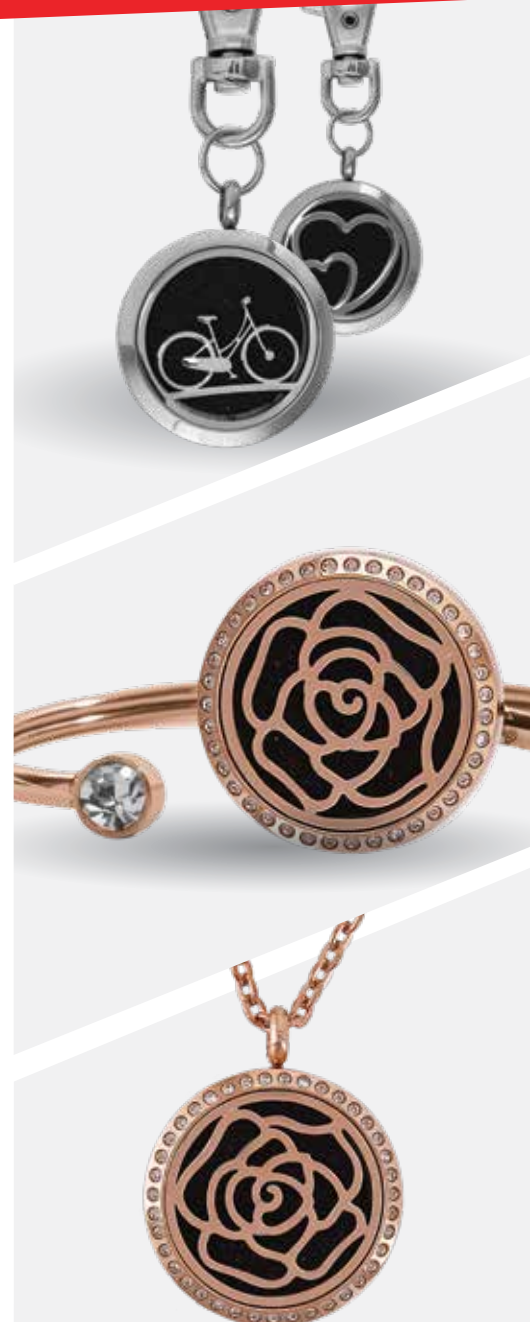
CD006



CD009



CD010



**COLOURFUL REPLACEMENT PADS ALSO AVAILABLE.**

**T-ZONE HEALTH™**

2-59 Comstock Rd., Scarborough, ON. M1L 2G6  
 416-285-6055 Fax 416-285-8918  
 info@t-zonehealth.com www.t-zonehealth.com

## CAR DIFFUSERS AND KEYCHAINS

### VENT CLIP

The vent clip installs right onto your car vents, and is easily removable.

### FELT PADS

The felt pad holds the essential oil. Two pads included.

### EASY DESIGN

The diffuser opens like a locket to add or change the essential oil pads. Magnetic closure. Stainless steel construction.



CD001  
LOTUS



CD002  
TREE



CD003  
LEAF



CD004  
FLOWER



CD005  
YIN YANG



CD006  
SPIRAL



CD007  
TREE 2



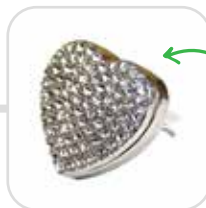
CD008  
BIKE



CD009  
PINK CAT



CD010  
PINK HEART



CD011  
WHITE HEART

CRYSTAL DESIGN!  
EXTRA LARGE SIZE!



KC001  
BIKE KEYCHAIN



KC002  
HEART KEYCHAIN



KC003  
LOTUS KEYCHAIN



### HOW TO USE

- Add a few drops of your favourite essential oil to the felt pad.
- Open the magnetic side closure of the car diffuser and insert the felt pad.
- Clip the car diffuser to your car vents.
- Add more essential oil to the felt pad any time, or switch the felt pad for another scent.



### T-ZONE HEALTH™

2-59 Comstock Rd., Scarborough, ON. M1L 2G6  
416-285-6055 Fax 416-285-8918  
info@t-zonehealth.com www.t-zonehealth.com

**ESSENTIAL OIL NECKLACE JEWELRY**

Pretty and sophisticated scent locket necklaces with matching chains included. All come with a velvety pouch, ready for gifting.



N003

N005

N006

N007



N009

N011

N012

N015



N023

N025

N038

N040



N041

N026

N027

N035

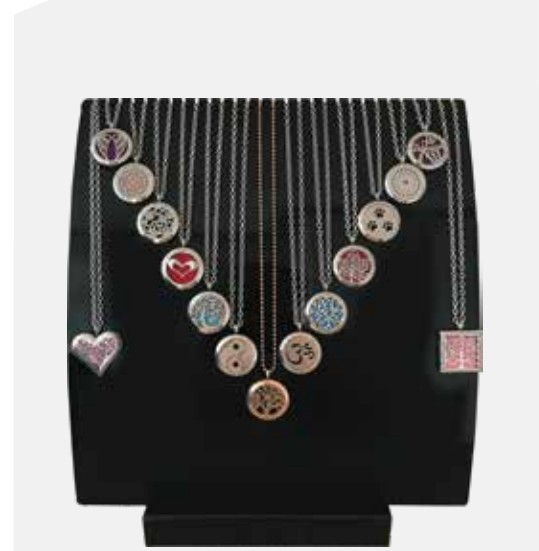


N036

N037

N042

N043



ACRYLIC STAND AVAILABLE

**T-ZONE HEALTH™**

2-59 Comstock Rd., Scarborough, ON. M1L 2G6  
 416-285-6055 Fax 416-285-8918  
 info@t-zonehealth.com www.t-zonehealth.com



## ESSENTIAL OIL BRACELET JEWELRY

Three styles of scent locket bracelets to choose from.

The bangle style bracelets have two types; one is a clip-on, secure closing style. The other is a clever twist design that makes them easier to put on, with a more generous fit.

The wrap-around style is made with vegan leather, in a contemporary double wrap design.

All types maintain the same easy to use locket design with replaceable felt pads.



B301



B302



B303



B305



B306



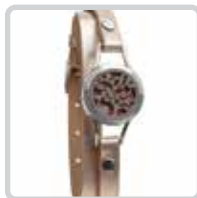
B307



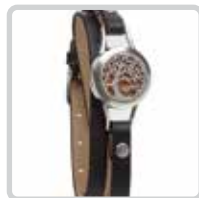
B308



B309



B310



B311



B312



**T-ZONE HEALTH™**

2-59 Comstock Rd., Scarborough, ON. M1L 2G6

416-285-6055 Fax 416-285-8918

info@t-zonehealth.com www.t-zonehealth.com

**ESSENTIAL OIL CRYSTAL JEWELRY**

Stunning rhinestone-rimmed essential oil locket jewelry for a more sophisticated, glamorous style.

Still the same easy to use locket design with replaceable felt pads.

Bracelets have a clever twist design that makes them easier to put on, with a more generous fit.



N026



N027



N028



N035



N036



N037



N042



N043



B305



B306



B307



B308



CD010  
CAR DIFFUSER



CD011  
CAR DIFFUSER

**T-ZONE HEALTH™**

2-59 Comstock Rd., Scarborough, ON. M1L 2G6  
416-285-6055 Fax 416-285-8918  
info@t-zonehealth.com www.t-zonehealth.com

**BRAND NEW**

## ESSENTIAL OIL AROMATHERAPY PEN

**High quality ballpoint pen with black ink.**

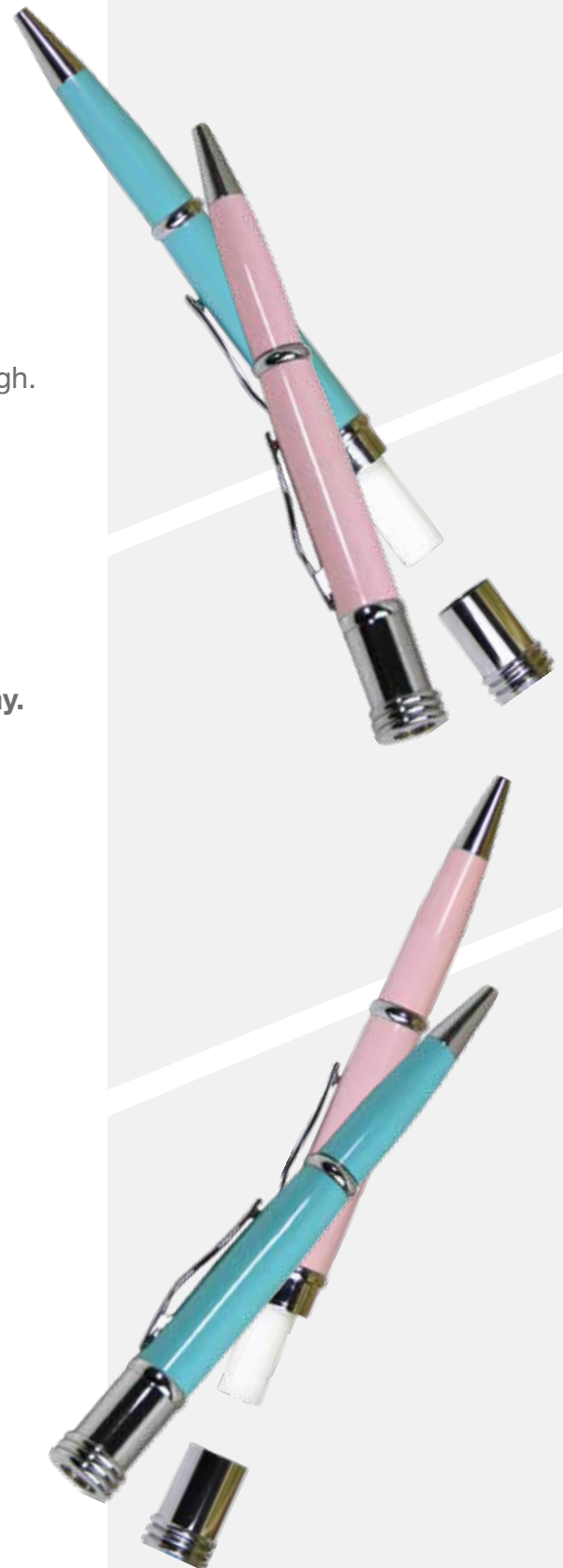
These ball point pens have a cotton wick insert in the top of the pen, and the silver mesh cover allows the fragrance to flow through.

Simply remove the cap, add a few drops of your favourite scent, and enjoy while you work!

A perfect gift for yourself or someone else.

Cotton wick refills available.

**Acrylic display also available - a match to the essential display.**



**T-ZONE HEALTH™**

2-59 Comstock Rd., Scarborough, ON. M1L 2G6

416-285-6055 Fax 426-285-8918

info@t-zonehealth.com www.t-zonehealth.com

## **MOUNTAIN GOLD™ HIMALAYAN BATH SALTS**

Our Himalayan salt is pure the way the ocean was millions of years ago. No nutrients are removed because it does not come from polluted seas.

The 2.5kg size is available in natural unscented as well as five different scents (eucalyptus, lavender, rose, vanilla, peppermint) and come beautifully packaged in a cloth bag with each bag individually tagged.

**Scented with all-natural essential oils.  
Also available in 10kg.**

### **BENEFITS**

It has been said that a half-hour Himalayan salt bath in a solution of between 1% and 8% salt has cleansing effects equivalent to a three-day fast! Toxins are released into the water while minerals are absorbed through the skin. The higher the salt content in the bath, the stronger the detoxifying effect on the skin. Salt solutions have also been suggested for dry skin, as the salt is stored in the upper layer of the skin and binds water, maintaining the natural protective film of the skin.



### **T-ZONE HEALTH™**

2-59 Comstock Rd., Scarborough, ON. M1L 2G6  
416-285-6055 Fax 416-285-8918  
info@t-zonehealth.com www.t-zonehealth.com

## **MOUNTAIN GOLD™ HIMALAYAN TABLE SALT**

Mountain Gold™ Himalayan Salt is a gourmet edible salt renowned for its subtle, nuanced flavour. It is hand-mined in the only place in the world that it exists, the foothills of the Himalayas in Pakistan.

Mountain Gold™ Himalayan Salt, unlike modern sea salt, is unrefined and without environmental pollutants. Sea salt has to be 'washed' to remove modern pollutants, which in turn strips over half of the other natural elements, which provide taste, beautiful colour, and even some nutrients.

Our salt is attractively packaged and is practically priced for everyday use.

**Available in fine, coarse and x-coarse in 250g, 500g and 1kg sizes.**



### **T-ZONE HEALTH™**

2-59 Comstock Rd., Scarborough, ON. M1L 2G6  
416-285-6055 Fax 416-285-8918  
info@t-zonehealth.com www.t-zonehealth.com

## **MOUNTAIN GOLD™ HIMALAYAN SALT BRINE**

Mountain Gold™ Himalayan natural crystal salt contains naturally occurring minerals that make the salt easier to absorb.

**How to use:** Put some salt crystals in a glass container. Cover them with pure water, and seal the container. The salty water (brine) reaches saturation in approximately 24 hours. If there are no crystals left, add more and wait another 24 hours. There are several ways to use the brine: one is to consume 4.9 ml (1 tsp) in a glass of water every morning and another common use is in a Neti Pot.

**Available in 1 kilo bags.**



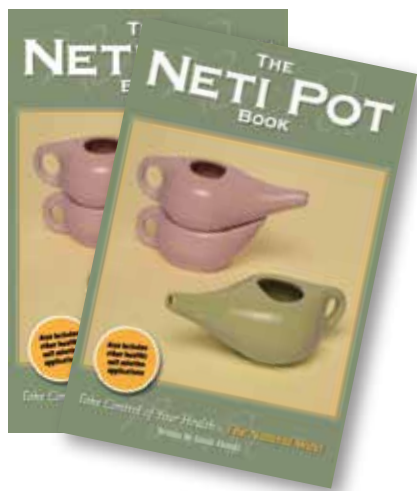
### **T-ZONE HEALTH™**

2-59 Comstock Rd., Scarborough, ON. M1L 2G6  
416-285-6055 Fax 416-285-8918  
info@t-zonehealth.com www.t-zonehealth.com

## NETI POTS

Our Neti Pots have very convenient and unique design. The Double Decker Neti Pot has a Neti Pot sitting on top of a ceramic pot that conveniently holds the salt solution. This eliminates mess and means no more hunting around for a separate glass container. Our Neti Pots come in four beautiful colours, tan, rose, mint and white.

Also check out our exclusive neti pot book!



**T-ZONE HEALTH™**

2-59 Comstock Rd., Scarborough, ON. M1L 2G6

416-285-6055 Fax 416-285-8918

info@t-zonehealth.com www.t-zonehealth.com

## HIMALAYAN SALT STONE COOKING SET

We have an amazing Salt Stone Cooking Set, with a beautiful 28-page recipe book.

This is a very exciting new item that delights home chefs with its versatility and charm. Salt stones can be heated to over 700°F for cooking, cooled to freezing, used for pre-cooking seasoning, post-cooking display, or any number of uses.

- ✓ Finest quality Himalayan Salt Stones (total size 12 x 8")
- ✓ Includes tray with handles
- ✓ Cloth storage bag for stones
- ✓ Full colour 28 page cook book
- ✓ Full colour beautiful packaging

## HIMALAYAN SALT STONES 3 STONE SET

- ✓ Package of 3 salt stones
- ✓ Cloth storage bag
- ✓ Full colour packaging



28-page recipe book  
& storage bag included!



### T-ZONE HEALTH™

2-59 Comstock Rd., Scarborough, ON. M1L 2G6  
416-285-6055 Fax 416-285-8918  
info@t-zonehealth.com www.t-zonehealth.com



## **HIMALAYAN SALT STONE MORTAR AND MARBLE PESTLE**

This stunning piece of kitchenware makes marinades, rubs, dips, toppings, cocktails and more in a snap!

Himalayan salt is naturally anti-bacterial - just wipe to clean. This is an all-natural product - no chemicals, treatments, or additives of any kind. 28-page recipe book included.

Available in 3 sizes.

### **HOW TO USE**

There are two main methods for using your mortar and pestle set – pounding and grinding.

**Pounding** is used to crush up larger pieces. Just as it sounds, put the ingredients in the bottom of the Himalayan salt mortar and use the rounded edge of the pestle to pound them down.

**TIP - place a hand over the mortar when pounding small ingredients like seeds, so they can't bounce out.**

**Grinding** is used to break small pieces into even smaller ones, to mix the flavours, and to mix in a bit of the salt. A trick is to swirl the pestle around the inside of the mortar to grind the ingredients together. If you want to add a little more salt, simply grind the pestle around the top portion of the mortar. You'll see little white marks on the mortar, which indicate salt is being ground out.

### **T-ZONE HEALTH™**

2-59 Comstock Rd., Scarborough, ON. M1L 2G6  
416-285-6055 Fax 416-285-8918  
info@t-zonehealth.com www.t-zonehealth.com



## **ULTIMATE OVEN GLOVE AND MITTS**

Our fantastic oven glove and mitt sets are the best in the industry in protecting from heat and flame.

### **Steam Proof Ultimate Oven Glove**

- ✓ Longer cuff length
- ✓ Higher heat, steam and flame resistance
- ✓ A fourth layer of protection
- ✓ Silicone Grip
- ✓ More streamlined fit - our gloves are fitted to the right and left hand, omitting some unneeded bulk.

Available in rust, pink, or cream. Gloves are sold in pairs for a better fit.

### **Steam Proof Ultimate Oven Mitt**

A typical oven glove design, with anything-but-typical performance! Protects against steam, heat, and flame.

- ✓ Extra long cuff length
- ✓ Higher heat, steam and flame resistance than similar mitts
- ✓ Seven layers of protection
- ✓ Not bulky – only 3 mm thick!
- ✓ Up to 662° F/350° C
- ✓ Sold in pairs.

Available in Black, Midnight Blue, and Mustard.



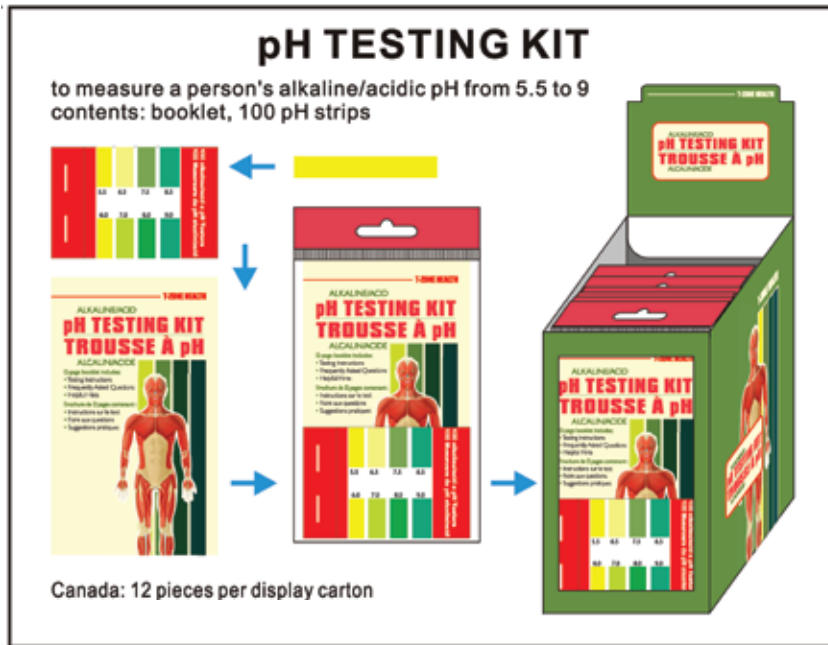
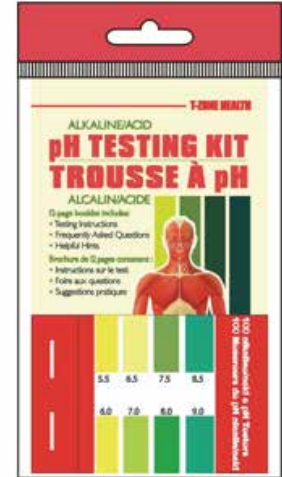
### **T-ZONE HEALTH™**

2-59 Comstock Rd., Scarborough, ON. M1L 2G6  
416-285-6055 Fax 416-285-8918  
info@t-zonehealth.com www.t-zonehealth.com

## pH TESTING KIT

A simple saliva test to easily find the pH level in your body. These strips measure alkaline/acidic pH from 5.5 to 9.80 pH strips are included in each pack - it also includes a booklet to teach ways to improve pH levels.

Packaged in a POS Counter Display box.



### T-ZONE HEALTH™

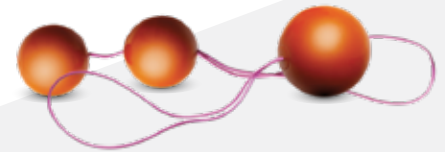
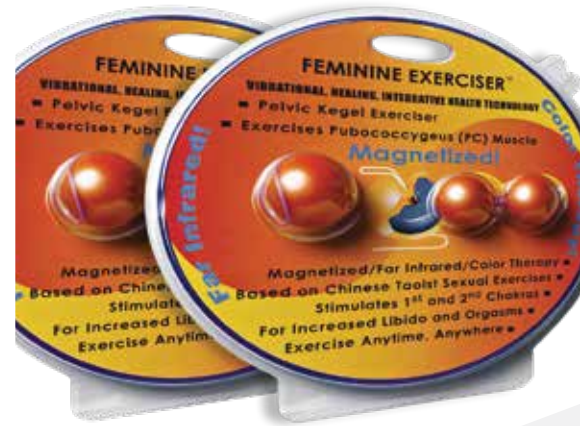
2-59 Comstock Rd., Scarborough, ON. M1L 2G6  
416-285-6055 Fax 416-285-8918  
info@t-zonehealth.com www.t-zonehealth.com

## FEMININE EXERCISER W/ FAR INFRARED AND COLOUR THERAPY

This deluxe kegel device used by women consists of a string of hard plastic spheres with a magnet inside. It is used to strengthen the PC muscle, which helps with bladder control.

Orange healing light helps balance sacral chakra dysfunction and health.

Far infrared energy promotes healing and reduces toxins stored in the body.



### T-ZONE HEALTH™

2-59 Comstock Rd., Scarborough, ON. M1L 2G6  
416-285-6055 Fax 416-285-8918  
info@t-zonehealth.com www.t-zonehealth.com

## ADJUSTABLE POWER BANDS

Our Adjustable Power Bands are a new design for universal resistance bands, replacing the need for multiple sets of single-purpose bands.

This is a basic but very versatile product for exercise and strength-training, at a reasonable cost. The design is great for retailers as it requires only 1 SKU to provide a universal solution, which avoids the need to stock & shelf multiple length and resistance bands.

Our power band package has 2 bands, and also includes a 12-page booklet with all the exercises anyone could need.



### T-ZONE HEALTH™

2-59 Comstock Rd., Scarborough, ON. M1L 2G6  
416-285-6055 Fax 416-285-8918  
info@t-zonehealth.com www.t-zonehealth.com

## **FIR WAIST BELT**

The T-Zone Vibration FIR belt promotes weight loss and protects against injury, this vital tool is a great addition to your weight loss toolbox. The combination of whole body vibration and far-infrared technology is an excellent way to work out or relax.

The heat generated by your T-Zone Vibration FIR belt increases metabolism as it tricks the body into thinking it is summer, which reduces the likelihood of fat being stored. It also promotes the removal and use of fat within the body. The fat particles at your abdomen where the belt is being used gradually break down into water, CO2 and salt. These compounds are then excreted harmlessly from the body, leaving a smoother, leaner physique.

Using far infrared technology, the T-Zone vibration FIR belt stimulates the muscle tissue beneath the belt, helping it stay loose and supple.

This energy, which is emitted naturally by the sun, makes us feel good. It is completely safe, nothing like harmful UV rays – in fact Far Infrared heat is what is used in hospital incubators for premature babies.

The body is 70 percent water, and the far infrared rays penetrate the skin to gently heat up that water within the body, slowly warming up the body tissue around it, just like the sun would. This increases blood flow by expanding the little blood vessels within the body known as capillaries, increasing oxygenation and helping damaged tissue recover. This also helps the body flush out toxins by improving blood flow to the affected parts.

Far infrared is great at reducing pain. Because it can penetrate so far below the skin-around three inches-it can help with joint pain, particularly that caused by arthritis. With most people over the age of 50 suffering from some form of joint dysfunction, the T-Zone vibration FIR belt can benefit almost everyone in this age group. It works by relaxing muscles and reducing the likelihood of muscle spasms.

**Available in medium (42") and large (50") sizes.**

### **T-ZONE HEALTH™**

2-59 Comstock Rd., Scarborough, ON. M1L 2G6  
416-285-6055 Fax 416-285-8918  
info@t-zonehealth.com www.t-zonehealth.com



### STANDING DESK EXTENDER

Check out this standing desk top extender! Finally an easy and inexpensive ergonomic solution, combined with the health benefits of a ready-to-go standing desk option!

Adjust it until it fits your exact height, arm length, and head angle requirements. Or use it at home to hold your tablet or laptop while reading or watching a movie while on the couch or in bed. You won't know what you did without it.

- ✓ Adjusts to virtually any height or shape
- ✓ Tilts for ergonomic perfection
- ✓ Non-slip rubberized feet
- ✓ Locks into place
- ✓ Cooling holes prevent computer over-heating (XTB model only)

#### Use it at home...

- ✓ Sitting on a couch or in bed
- ✓ As a reading, eating, or work tray
- ✓ No-strain while watching movies from your laptop
- ✓ To hold recipes

#### Use it at the office...

- ✓ Transform any desk to a sit/stand desk
- ✓ As an extra shelf
- ✓ As a monitor riser

An extra shelf is also available as an accessory – use as a mouse tray or for extra storage.

**Current available models: XTB, 4LTB**

#### T-ZONE HEALTH™

2-59 Comstock Rd., Scarborough, ON. M1L 2G6  
416-285-6055 Fax 416-285-8918  
info@t-zonehealth.com www.t-zonehealth.com



### TS1 - SIT-TO-STANDING DESK

You likely know the recent interest and health findings in regards to standing desks. They are a huge new segment of the market.

We developed a mechanism that would allow easy height adjustment, while still keeping an eye on costs. Most adjustable standing desks either use an awkward manual mechanism, or a very costly electrical system. We developed an adjustment using a pneumatic lift, similar to what is used on office chairs. With our pneumatic lift, one touch is all you need to raise the desk - simply pull the lever and the air pressure system will raise the table itself. If you want to lower the desk, pull the lever while pushing downwards on the desk.

These are computer-desk sized (not a full wide desk). They are perfect for setting beside a regular desk - the user may stand when on the computer, and still sit for talking to co-workers etc.

It is flat packed for shipping and easy to assemble.



### T-ZONE HEALTH™

2-59 Comstock Rd., Scarborough, ON. M1L 2G6

416-285-6055 Fax 416-285-8918

info@t-zonehealth.com www.t-zonehealth.com



## WHOLE BODY VIBRATION MACHINES

The ultimate 'no work' workout with T-Zone's Whole Body Vibration Technology.

### *What if....*

There were a machine that would work your muscles for you?  
And it actually felt good, like a massage?  
Plus it took a fraction of the time it would take in a gym?

### WHAT CAN WHOLE BODY VIBRATION DO FOR YOU?

- ✓ Assists in Weight Loss
- ✓ Strength Building
- ✓ Golf and Sports
- ✓ Flexibility
- ✓ Warming Up And Cooling Down
- ✓ Low Impact Workouts

Ask about our EZIPAY plan



### T-ZONE HEALTH™

2-59 Comstock Rd., Scarborough, ON. M1L 2G6  
416-285-6055 Fax 416-285-8918  
info@t-zonehealth.com www.t-zonehealth.com

T-zone™

ELECTRIC  
BICYCLES

# 'THE TRAVELLER' FOLDING BIKE

EASY TO STORE AND TRANSPORT

STEEL ALLOY FRAME  
WITH CARBON

1-MINUTE FOLD



SOFT GEL SEAT WITH SPRING  
SUPPORT & SHOCK ABSORBERS

REMOVABLE  
LITHIUM BATTERY

COMES WITH  
CAR CHARGER!



## ECONOMICAL

STILL HAS ALL THE GREAT FEATURES OF THE  
ULTIMATE BUT LESS DISTANCE BETWEEN CHARGES.

**MOTOR:** 24V 350W BRUSHLESS GEAR MOTOR

**BATTERY:** 24V 6AH LITHIUM BATTERY

**CHARGING TIME:** 2-3H

**RANGE:** 20-25KM WITH PAS

**WEIGHT CAPACITY:** 100 KG/220 LBS

**WEIGHT W/O BATTERY:** 20KG

**BATTERY WEIGHT:** 1.44KG

**TIRES:** 20"X1.75"

**MAX SPEED:** 32KM/H

## ULTIMATE

EXCEPTIONAL DISTANCE (KILOMETERS)  
PER CHARGE.

**MOTOR:** 36V 350W BRUSHLESS GEAR MOTOR

**BATTERY:** 36V 10AH LITHIUM BATTERY

**CHARGING TIME:** 5-7H

**RANGE:** 25-35KM WITH PAS

**WEIGHT CAPACITY:** 110 KG/242 LB

**WEIGHT W/O BATTERY:** 20.6KG

**BATTERY WEIGHT:** 2.9KG

**TIRES:** 20"X1.75"

**MAX SPEED:** 32KM/H



[WWW.T-ZONEELECTRICBIKES.COM](http://WWW.T-ZONEELECTRICBIKES.COM)

**T-zone™**

**ELECTRIC  
BICYCLES**

## 'THE WAGON' 3-WHEELER BIKE

GET THIS IF YOU'RE LOOKING FOR MORE STABILITY



YOU CAN USE THIS 3 WHEELER FOR MOBILITY ON SIDEWALKS OR ON THE ROAD FOR GENERAL CONVENIENT TRANSPORTATION (PLEASE CHECK YOUR MUNICIPALITY FOR LOCAL LAWS).

**MOTOR:** 36V 350W BRUSHLESS GEAR MOTOR  
**BATTERY:** 36V 10AH LITHIUM BATTERY  
**METER:** LED METER  
**CHARGING TIME:** 5-7H  
**FRAME/FORK:** STEEL  
**CRANK:** AL-ALLOY  
**ASSISTANT SYSTEM:** PAS 1:1,1:2,1:3  
**TIRES:** 20"X1.75"

**BRAKES:** F V BRAKE, R DISC BRAKE  
**DERAILLEUR:** SHIMANO 6  
**MAX SPEED:** 32KM/H  
**RANGE:** 20-40KM WITH PAS  
**LOAD CAPACITY:** 125KG  
**WEIGHT W/O BATTERY:** 28KG  
**BATTERY WEIGHT:** 2.9KG



[WWW.T-ZONEELECTRICBIKES.COM](http://WWW.T-ZONEELECTRICBIKES.COM)

**T-zone™**

**ELECTRIC  
BICYCLES**

# 'THE EASY RIDER' ELECTRIC BIKE

RIDE ON 4" TIRES



**REMOVABLE BATTERY**

**MOTOR:** 36V 350W BRUSHLESS GEAR MOTOR

**BATTERY:** 36V 10AH LITHIUM BATTERY

**METER:** LED METER

**CHARGING TIME:** 5-7H

**FRAME/FORK:** STEEL

**ASSISTANT SYSTEM:** PAS 1:1,1:2,1:3

**TIRES:** 20" X 4"

**BRAKES (F/R):** F/R DISC BRAKE

**DERAILLEUR:** SHIMANO 6

**MAX SPEED:** 32KM/H

**RANGE:** 20-40KM WITH PAS

**LOAD CAPACITY:** 120KG

**SEAT HEIGHT RANGE:** 35-40"

**WEIGHT W/O BATTERY:** 23.6KG

**BATTERY WEIGHT:** 2.9KG



[WWW.T-ZONEELECTRICBIKES.COM](http://WWW.T-ZONEELECTRICBIKES.COM)

**T-zone™**

**ELECTRIC  
BICYCLES**

# 'THE VOYAGER' ELECTRIC BIKE

7 SPEEDS / 3 PEDAL ASSIST



**SHIMANO GEARS**

**'EASY ON'  
BAR HEIGHT**

**SOFT GEL SEAT WITH SPRING  
SUPPORT & SHOCK ABSORBERS**

**REMOVABLE  
LITHIUM BATTERY**

**STEEL ALLOY FRAME  
WITH CARBON**

## **REMOVEABLE BATTERY**

**MOTOR:** 36V 350W BRUSHLESS GEAR MOTOR

**BATTERY:** 36V 10AH LITHIUM BATTERY

**METER:** LED METER

**CHARGING TIME:** 5-7H

**FRAME/FORK:** STEEL

**CRANK:** AL-ALLOY

**ASSISTANT SYSTEM:** PAS 1:1,1:2,1:3

**TIRES:** 26" X 1.75"

**BRAKES (F/R):** V BRAKE

**DERAILLEUR:** SHIMANO 7

**MAX SPEED:** 32KM/H

**RANGE:** 25-35KM WITH PAS

**LOAD CAPACITY:** 110KG

**SEAT HEIGHT RANGE:** 35.5-40.5"

**WEIGHT W/O BATTERY:** 19KG

**BATTERY WEIGHT:** 2.9KG



**WWW.T-ZONEELECTRICBIKES.COM**

**T-zone™**

**ELECTRIC  
BICYCLES**

# 'THE WANDERER' ELECTRIC BIKE

7 SPEEDS / 3 PEDAL ASSIST



**REMOVABLE BATTERY**

**MOTOR:** 36V 350W BRUSHLESS GEAR MOTOR

**BATTERY:** 36V 10AH LITHIUM BATTERY

**METER:** LED METER

**CHARGING TIME:** 5-7H

**FRAME/FORK:** STEEL

**CRANK:** AL-ALLOY

**ASSISTANT SYSTEM:** PAS 1:1,1:2,1:3

**TIRES:** 700\*23C ROAD

**BRAKES (F/R):** DISC BRAKE

**DERAILLEUR:** SHIMANO 7

**MAX SPEED:** 32KM/H

**RANGE:** 40-45KM WITH PAS

**LOAD CAPACITY:** 110KG

**SEAT HEIGHT RANGE:** 37.5-42.5"

**WEIGHT W/O BATTERY:** 15.6KG

**BATTERY WEIGHT:** 2.9KG



[WWW.T-ZONEELECTRICBIKES.COM](http://WWW.T-ZONEELECTRICBIKES.COM)

# T-ZONE ELECTRIC BIKES

## What is wattage?

Watts are how much power the motor can consume at one time. It indicates how much power your bike can access.

## What is voltage?

Voltage is how fast electricity can be pushed through the bike. It indicates the responsiveness of your bike.

## What is AH?

AH, or Amp hours, indicates the capacity of your battery. It indicates how much electricity your battery can store.

## Why are lithium batteries better than lead acid?

- 1. CHARGING TIME** - Lead acid takes least twice as long to charge.
- 2. COLD WEATHER** - Lithium batteries are much more efficient in cold weather.
- 3. WEIGHT** - Lithium is about 1/3 of the weight and 1/2 the size.
- 4. ENVIRONMENT** - Lithium is easier on the environment.
- 5. ECONOMICAL** - Over a 10 year period, spending \$300.00 for a lithium battery will have cost you \$1000.00 with lead acid.

## Why steel instead of aluminum?

In general, except for titanium, which is very expensive, steel is the strongest. Steel bikes last seemingly forever. Although steel is very strong, it is not so stiff as aluminum and therefore gives a gentler ride. Steel will bend but not break or shatter. Aluminum can

snap and cause serious structural damage and injury to the rider. Steel bikes are often lighter than aluminum. Because steel is stronger, less material is needed. Steel is more economical. You get more for your money with a steel bike. Small amounts of carbon are added for additional strength. Ours is shot blasted and bake painted. Shot blasting thoroughly cleans the surface before painting, and baked paint lasts longer.

## Do you have a rear hub or a mid hub?

Rear hub on all models (except the 3 wheeler, which has the hub on the front wheel). This is preferred typically as it is much more reliable. Mid hub is only required on racing speed bikes, due to the weight distribution.

## Where are T-Zone Electric Bicycles made?

Our bikes are made to exacting standards in China, where our team works hard to perfect every bike. We also employ an independent quality assurance engineering team, who works with our factory to double check everything. With our nearly 40 years of overseas manufacturing experience, we have huge confidence in our quality.

## What about returns?

T-Zone Electric Bikes will gladly exchange or refund unopened items within 15 days of delivery with an original receipt. Customer is responsible for return shipping costs. Once opened, a \$50 restocking fee will also apply. No returns if the e-bike has been assembled.

## What is the warranty?

One year warranty on bike and bike parts. Four year pro-rated on battery. This means that the warranty coverage changes proportionally to the length of time the customer has had the battery. If it fails right away, a replacement battery is 100% free. If it fails 2 years after purchase, a replacement battery is 50% off etc. Warranty is calculated by 3-month periods.

**SCOOTERS**

Electric scooters are a huge trend that is surging eastward across North America. Washington has even recently switched its bike rental program over to an electric scooter rental program.

These electric scooters are literally the best in the industry. They feature lithium ion vs typical lead acid battery, proprietary ‘gravity’ sensor safety feature which acts as the accelerator pedal. This sensor senses if the rider has stepped off the scooter and then stops the motor.

They have a higher weight maximum, longer maximum distance, and shorter charging time than the competition. **EMC, LVD, ROHS certified.**



	<b>6-13</b>	<b>13+ Adult</b>
<b>Age</b>	6-13	13+ Adult
<b>Max Weight Capacity</b>	50 kg (110 lbs)	100 kg (220 lbs)
<b>Max Speed</b>	12 km/7.5 miles	29 km/18 miles
<b>Variable Speed</b>	Yes	Yes
<b>Distance (up to)</b>	12 km/7.5 miles	12 km/7.5 miles
<b>Battery Type</b>	Lithium Ion	Lithium Ion
<b>Battery Charge Time</b>	3 hrs	3 hrs
<b>Frame</b>	Alum	Alum
<b>Foldable</b>	No	Yes
<b>Wheel Size</b>	5 in	8 in
<b>Start Method</b>	Kick	Kick
<b>Scooter Weight</b>	6.2 kg (13.7 lbs)	8.5 kg (18.7 lbs)
<b>Wattage</b>	150 watt	250 watt
<b>Voltage</b>	24V	36V
<b>Battery Capacity (AH)</b>	3.6AH	2.0AH
<b>Special Features</b>	Gravity Sensor	Gravity Sensor
<b>Factory Certifications</b>	EMC, LVD, ROHS, Machinery	EMC, LVD, ROHS, Machinery

Age ranges are by suggestion only. Check local laws.



**SCOOTERS**



**YOUTH**

**Age 6-13**



**YOUTH**

**Age 6-13**



**ADULT**

**Age 13+**